



THE EXCHANGE CLUB OF NASHVILLE BULLETIN

Please join us Tuesday, January 15, 2008, at 12:00 Noon in the Suite Level Club at the Sommet Center.

The Exchange Club
of Nashville
P.O. Box 60128
Nashville, TN 37206
Phone: 615-255-6035
Fax: 615-254-1186
molly@
exchangeclubof
nashville.com

www.exchangeclubofnashville.com

THE
Exchange Club
of Nashville
MEETS EVERY
TUESDAY AT
NOON
IN THE
SOMMET
CENTER

UPCOMING DATES TO REMEMBER

January 17
Board of Directors
Meeting

January 22
NO MEETING

January 29
Dr. Kaelin/Bobby Bell
"Steroid Use"

February 5
Barry Simmons,
"Hope for Lwala"



Our Special Guest Speaker will be:

**Adam Lee,
Certified Personal Trainer,
InnerStrength**

Topic:

**"Maintaining Your New Years Resolutions Through
Exercise and Proper Eating."**

INVOCATION: Kevin Roddey

SIGN UP TO WORK THE ANTIQUE & GARDEN SHOW!

The following shifts are available.

Sun., Feb 10	8- 9:30 a.m. (move to Convention Center, truck/SUV helpful)	
Wed., Feb 13	4:30—5:30 p.m. (unpack show programs)	
Thurs., Feb 14	9:30 a.m.—12:30 p.m. 3:30—7:30 p.m.	12:30—3:30 p.m.
Fri., Feb 15	9:30 a.m.—12:30 p.m. 3:30—7:30 p.m.	12:30—3:30 p.m.
Sat., Feb 16	9:30 a.m.—12:30 p.m. 3:30—7:30 p.m.	12:30—3:30 p.m.
Sun., Feb 17	9:30 a.m.—12:30 p.m. 3:00—5:00 p.m.	12:30—3:00 p.m. 5:00—8:00 p.m.
Mon., Feb 18	9:30 —11:00 a.m. (move office back to Cheekwood, truck/ SUV helpful)	

To volunteer, call the Club Office, 255-6035.



Third Quarter Dues Invoices were mailed.

Please be sure to pay within 30 days!

Reminder to Board of Directors....

Our next meeting is scheduled for January 17, 11:45 a.m., at the Nashville City Club. Please RSVP and send agenda items to Molly at 255-6035, or molly@exchangeclubofnashville.com.

HAVE A PROSPECTIVE MEMBER?

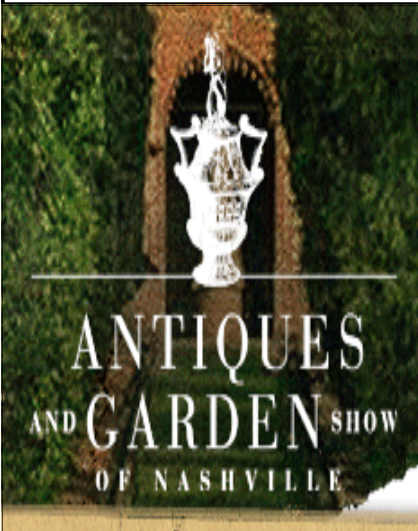
For New Membership questions, please call Owen Kelly, 742-8746, or Will Hawkins, III, 726-0050.

And, remember, if you bring a prospective member to a meeting, please let us know in advance!

Membership is the life of Exchange!!

MISSION STATEMENT

EXCHANGE, America's Service Club, is a group of men and women working together to make our communities better places to live through programs of service in Americanism, community service, youth activities, and its national project, the Prevention of Child Abuse.



Feb. 14 - 17, 2008

Preview Party Invitations and Show Tickets will be mailed next week!

**Preview Party, Feb. 13
6:30—9:30 p.m.**

**Young Collectors Party, Feb. 15
5:30—8:30 p.m.**

**RAFFLE TICKETS - \$5.00 each
(available by contacting Kevin Roddey
Office 665-4715 or Cell 293-0979)**

Prizes

**Viking Natural Gas 41" Outdoor Kitchen
18 Karat White Gold and Keshi Pearl Brooch
Antique Mahogany Brassbound Writing Box
Loews Coronado Bay Resort & Spa in San Diego, CA (3 nights, 4 days for two, including airfare)
\$1,000 Shopping Spree at The Cotton Mill**

***Raffle tickets can be billed to your EC account**

DID YOU KNOW....

Who benefits from the A&G Show?
The Antiques and Garden Show of Nashville is in its 18th consecutive year of providing funding for the Exchange Club Charities, Inc., a non-profit organization dedicated to fundraising with a focus on children; and for operations and continual preservation of the Cheekwood Botanical Garden & Museum of Art.

EXCHANGE CLUB CHARITIES, INC. has contributed well over a million dollars to charitable community projects during the last 25 years.

**The Official Publication of the
EXCHANGE CLUB OF
NASHVILLE
Club No. 2133, National Region 6
Tennessee District #24, Division V
Charter Date: August 16, 1920**

2007-2008 BOARD OF DIRECTORS

James V. Hunt
William W. DeCamp
Gus Puryear
John Hayworth
Frank Hammer
Jay Hoover

President
President-Elect
Vice President
Secretary
Asst. Secretary
Treasurer

jhuntsr@benefitcommunications.com
bill.decamp@pnfp.com
guspuryear@correctionscorp.com
jhayworth@walkertipps.com
frank.hammer@pnfp.com
jayhoover@bsh-cpa.com

CARRY-OVER DIRECTORS

Clay Bright
Charles W. Cook, III
Kathryn A. Greene

cbright@brasfieldgorrie.com
charlie.cook@arlaw.com
kgreene@stephens.com

ONE-YEAR DIRECTORS

Robert Andrews
Katherine E. Beasley
Robert Feldman
Donald McKenzie
Dan Puryear

robert.andrews@ubs.com
katherine.beasley@suntrust.com
rfeldman4978@aol.com
dmckenzie@dmckenzielaw.com
dpuryear@smythepuryear.com

TWO-YEAR DIRECTORS

Frank Bass, III
Steve Horn
Pamela Johnson

fbass@leedannerbass.com
steve.horn@pnfp.com
johnsonp@mail.belmont.edu

VOTING COMMITTEE DIRECTORS

Nancy Britt
L. Owen Kelly
William B. Hawkins, III
John Dwyer
May Dean Eberling
Steve Ezell
Steve Eisen
Art Rebrovik

National/District Liaison
Membership Co-Director
Membership Co-Director
Publicity
1st Qtr. Programs Director
2nd Qtr. Programs Director
3rd Qtr. Programs Director
4th Qtr. Programs Director

ngbritt@comcast.net
whitbridge15@aol.com
whawkins@joneslawfirmplc.com
jdwyer@wkrn.com
mdeberling@bellsouth.net
steve.ezell@landcorp.com
sjeisen@bakerdonelson.com
artrebrovik@nmgadvisers.com

EXCHANGE CLUB CHARITIES

Eleanor Willis
L. Webb Campbell, II

2006-2007 Chair
2007-2008 Chair

eleanor.willis@nashville.gov
wcampbell@sherrardroe.com

ANTIQUES & GARDEN SHOW

Gus Puryear

Chair

guspuryear@correctionscorp.com